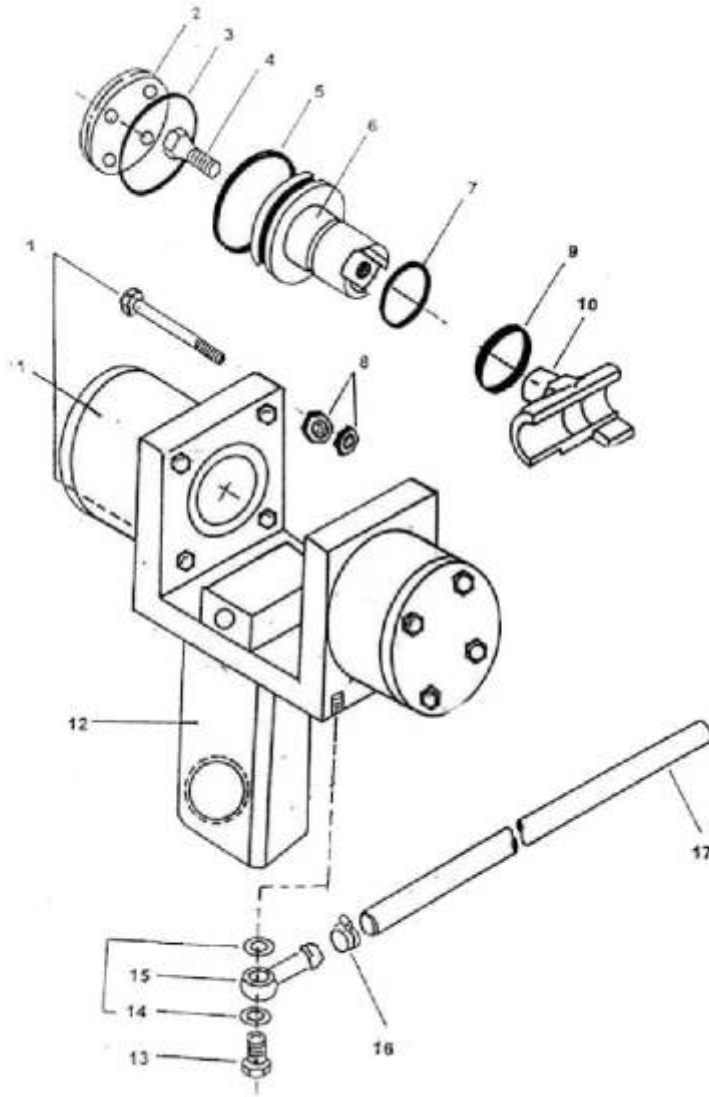


- 32mm & 38mm



EV #	Description	Ref Part #	Quantity
-	Drill Steel Support (38 mm) - Pneumatic Version	9718 3556 80	1
-	Drill Steel Support (32 mm) - Pneumatic Version	3162 1110 84	1
1	Bolt (Modified)*	WD 0030 (M)	8
2	Cover (Modified)*	WD 0031 (M)	2
3	O Ring (Modified)*	0663 6148 00 (M)	2
4	Screw	3142 0264 00	2
5	O Ring	0663 2149 00	2
6	Piston (Modified)*	WD 0032 (M)	2
7	O Ring (Modified)*	0663 6135 00 (M)	2
8	Nut (Modified)*	WD 0033 (M)	16
9	Seal Ring (Modified)*	066 59193 00 (M)	2
10A	Drill Steel Support Hal, 38 mm (1½ Round (Modified)*	WD 0034 (M)	2
10B	Drill Steel Support Hal, 32 mm (1¼ Round (Modified)*	3142 0262 00 (M)	2
11	Cylinder (Modified)*	WD 0035 (M)	2
-	Cylinder and Piston Complete Assembly (Modified)*	WD 0036 (M)	2
12	Drill Steel Support (Modified)*	WD 0037 (M)	1
13	Pressure Screw (Modified)*	0627 5113 00 (M)	2
14	Packing (Modified)*	0653 1070 00 (M)	4
15	Banjo Connection (Modified)*	9000 0294 00 (M)	2
16	Hose Clamp (Modified)*	0347 6104 00 (M)	2
17	Air Hose (Modified)*	9030 0200 00 (M)	2
-	Bushing for RMT 10	3142 0261 00	-
-	Piston for RMT 10	3142 0263 00	-
-	Lock Ring for RMT 10	0335 2177 00	-
-	Cover for RMT 10	3142 0265 00	-

\* Suffix "M" with the Ref. Part # is Modified